



Search cities, neighbourhoods, or schools

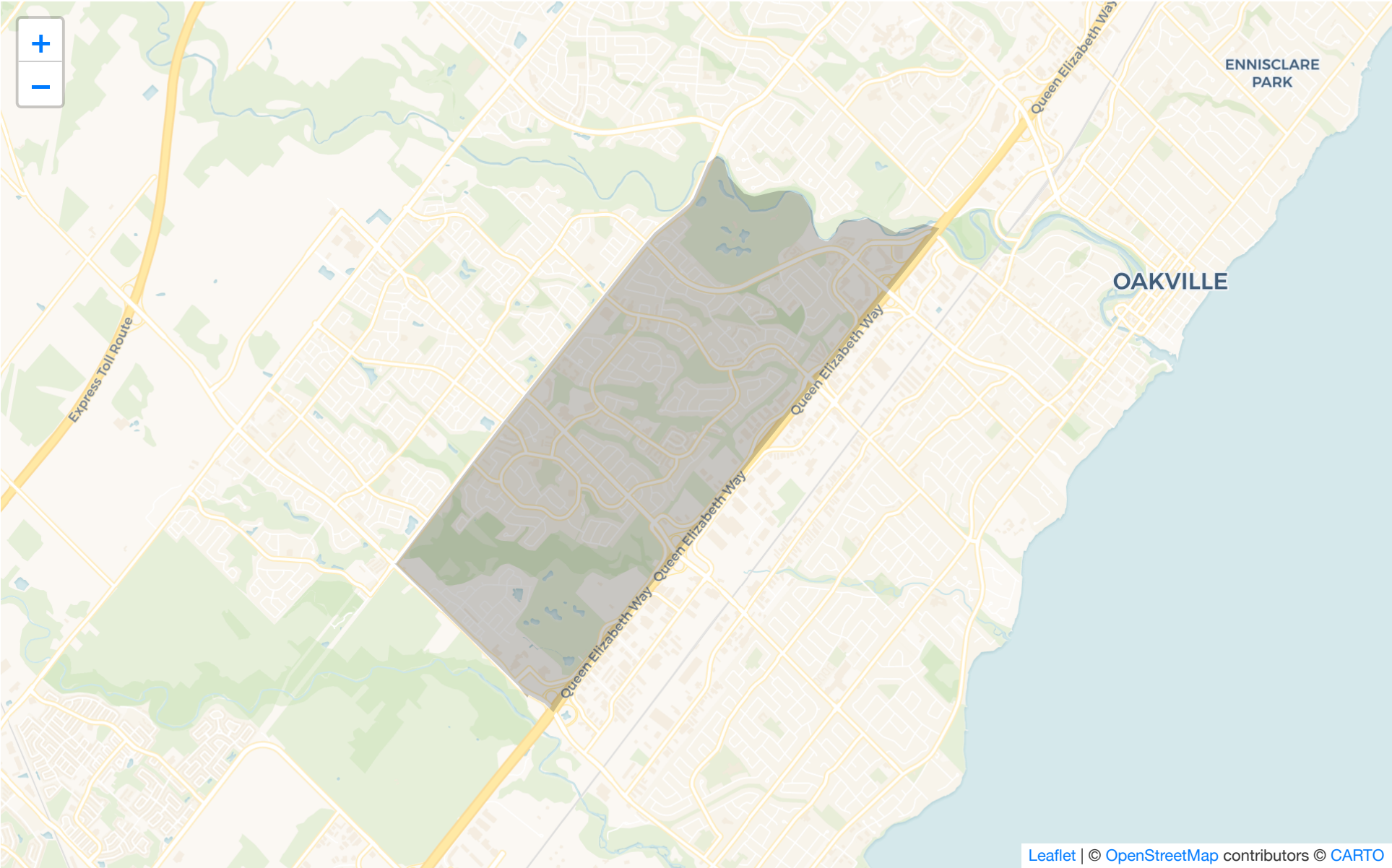


NEIGHBOURHOOD GUIDE

Glen Abbey

In this Neighbourhood Guide, you'll find out more about the people who live here as well as the schools, parks and recreation facilities, homes, and more.

Glen Abbey has a consistent population, and is popular with families with teens, people in their 40s, people in their 50s, and people in their 60s. Glen Abbey is a large neighbourhood located in northwest Oakville, and is known for being home to the famous Glen Abbey Golf Club. Glen Abbey was a planned community, developed in the 1980s-1990s. This neighbourhood features many green spaces, park lands, and trails, and Fourteen Mile Creek runs through the southwest region. There are also pockets of commercial and shopping areas. Most homes are single-detached, 2-storeys, and there are larger homes on ravine lots, as well as pockets of townhomes and condo highrises.



Leaflet | © OpenStreetMap contributors © CARTO



of households and 16% of households are one person living alone. People in Glen Abbey come from 125 different ethnic origins, and 35% are first-generation immigrants, while 26% are second-generation immigrants.

Neighbourhood Households

6,900

Neighbourhood Population

20,192

Household Size

- 1 person - 16%
- 2 persons - 28%
- 3 persons - 18%
- 4 persons - 23%
- 5 or more persons - 12%

Household Types

- One-person households - 16%
- Non-family households - 1%
- Families with children - 57%
- Couples without children - 22%
- Multiple families in household - 2%

Children Per Family

- 1 child - 27%
- 2 children - 31%
- 3 or more children - 11%

Broad Age Ranges

- 0 to 14 years - 17%
- 15 to 64 years - 68%
- 65 years and over - 14%



Canadian - 19%

Scottish - 19%

Irish - 18%

Italian - 9%

Age of Primary Household Maintainer

15 to 24 years - 0%

25 to 34 years - 5%

35 to 44 years - 15%

45 to 54 years - 29%

55 to 64 years - 25%

65 to 74 years - 14%

75 to 84 years - 6%

85 years and over - 1%

Specific Age Groups

0 to 4 years - 3%

5 to 9 years - 6%

10 to 14 years - 7%

15 to 19 years - 8%

20 to 29 years - 11%

30 to 39 years - 8%

40 to 49 years - 14%

50 to 59 years - 16%

60 to 69 years - 11%

over 70 years - 6%

Glen Abbey Schools

Glen Abbey has great elementary schools, great secondary schools, elementary special programs, and secondary special programs. There are 9 public schools and 10 Catholic schools serving this neighbourhood. The special programs offered at local schools include French Immersion, International Baccalaureate, Gifted/Talented Program, and Advanced Placement.

Public Schools

9



10

Public

- [White Oaks SS](#)
- [Pilgrim Wood PS](#)
- [ÉS Gaétan Gervais](#)
- [ÉE du Chêne](#)
- [Heritage Glen PS](#)
- [Abbey Park HS](#)
- [Abbey Lane PS](#)
- [ÉE Patricia-Picknell](#)
- [Montclair PS](#)

Catholic

- [St Mary Catholic ES](#)
- [St Bernadette Catholic ES](#)
- [St Ignatius of Loyola Catholic SS](#)
- [St Teresa of Calcutta Catholic ES](#)
- [Holy Trinity Catholic SS](#)
- [St Joan of Arc Catholic ES](#)
- [ÉÉC Sainte-Marie-Oakville](#)
- [St Matthew Catholic ES](#)
- [St Michael Catholic ES](#)
- [ÉSC Sainte-Trinité](#)

Having Fun in Glen Abbey

Fun is easy to find at the many parks & rec facilities here. Parks in Glen Abbey feature playgrounds for kids, sports parks, and skating. There are 18 parks in this neighbourhood, with 80 recreational facilities in total. The average number of facilities per park is 4.

Number of Parks

18

Number of Recreation Facilities



Recreation Facilities in Neighbourhood Parks

Playgrounds - 13

Pool - 1

Arena - 1

Rinks - 5

Tennis Courts - 16

Basketball Courts - 5

Ball Diamonds - 7

Sports Fields - 7

Tracks - 2

Community Centre - 1

Splash Pads - 2

Skateboard Park - 1

Golf Courses - 2

Sports Courts - 4

Driving Range - 1

Trails - 9

Fitness/Weight Room - 1

Gyms - 2



As part of our mission to help you with home affordability, we are actively searching for special offers from Canada's best mortgage providers. Watch this space!

Getting Around in Glen Abbey

There are 281 transit stops in this neighbourhood. Rail stations include Bronte. In Glen Abbey, there are mostly vehicle commuters and most commute to another city.

Commute Destination for Residents

Commute within the city - 36%



Commute Types

- Vehicle - 76%
- Transit - 18%
- Walk/bike - 2%

Commute Times of Residents

- 15 to 29 minutes - 26%
- 30 to 44 minutes - 18%
- 45 to 59 minutes - 13%
- 60 minutes and over - 18%
- Less than 15 minutes - 21%

Work and Education in Glen Abbey

In Glen Abbey, 55% of adult residents hold a bachelor's degree or higher and 81% have any postsecondary education. The professional, scientific and technical services industry is the most common for residents.

Household Income

- Under \$30,000 - 7%
- \$30,000 to \$39,999 - 4%
- \$40,000 to \$49,999 - 4%
- \$50,000 to \$59,999 - 4%
- \$60,000 to \$69,999 - 4%
- \$70,000 to \$79,999 - 4%
- \$80,000 to \$89,999 - 4%
- \$90,000 to \$99,999 - 4%
- \$100,000 to \$124,999 - 9%
- \$125,000 to \$149,999 - 8%
- \$150,000 to \$199,999 - 12%
- \$200,000 and over - 26%

Most Common Occupations (Top 3)

- Sales and service occupations - 21%
- Business, finance and administration occupations - 19%
- Management occupations - 18%



Retail trade - 11%

Finance and insurance - 10%

Employment

Employed - 61% of people over age 15 are employed

Unemployed - 5% are unemployed

Not in the labour force - 33% are retired, students, homemakers, etc.

Glen Abbey Homes

In Glen Abbey, there are a mix of home types. This neighbourhood has a consistent population, with 29% of households having moved within the past 5 years and 9% having moved within the past year. It has a mix of older and newer homes and is mostly owner-occupied.

Home Types

Single-detached house - 58%

Semi-detached house - 1%

Duplex - 0%

Row house - 19%

Low-rise apartment/condo - 11%

High-rise apartment/condo - 9%

Condominium Status

Condominium - 22%

Not condominium - 77%

Number of Bedrooms in Homes

1 bedroom - 4%

2 bedrooms - 15%

3 bedrooms - 27%

No bedrooms - 0%

4 or more bedrooms - 51%

Period of Home Construction

1961 to 1980 - 6%



2001 to 2005 - 7%

2006 to 2010 - 1%

2011 to 2016 - 1%

1960 or before - 0%

Renters & Owners

Owner - 85%

Renter - 14%

See Glen Abbey listings

REALM users log in
here to view listings

or

View listings publicly
on TRREB.ca

No REALM account? Ask your agent