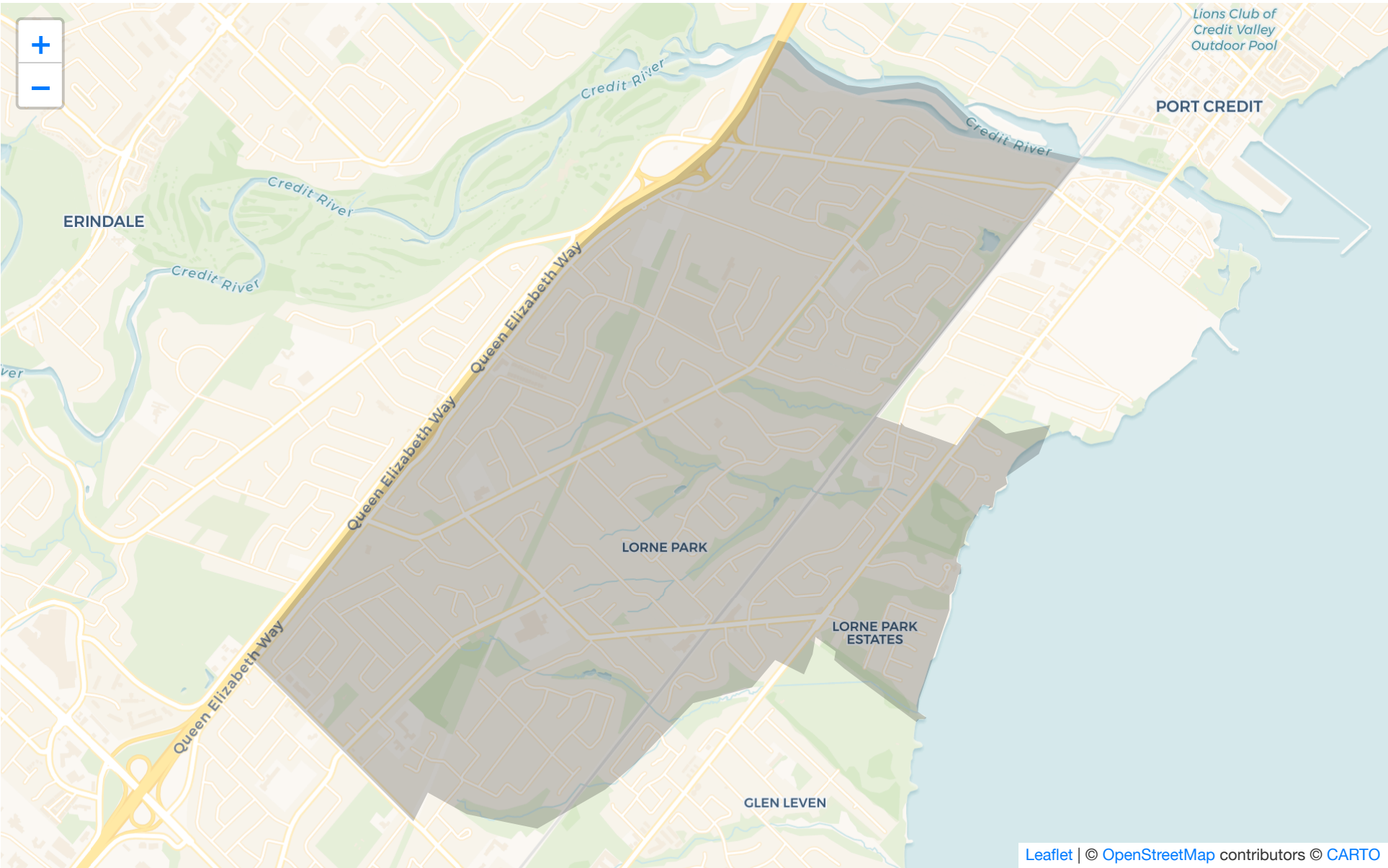


NEIGHBOURHOOD GUIDE

# Lorne Park

In this Neighbourhood Guide, you'll find out more about the people who live here as well as the schools, parks and recreation facilities, homes, and more.

Lorne Park has a consistent population, is higher income, and is popular with families with teens, people in their 40s, people in their 50s, and people in their 60s. Lorne Park is in southwest Mississauga, with Lake Ontario as its most southern boundary. The area was once a large park/summer resort, and then became a cottage community until amalgamation into Mississauga in 1968. Lorne Parke now features very expensive properties and mansions, especially in the Lorne Park Estates area, as well as townhome condos, and a variety of styles of single-detached homes.





of households and 10% of households are one person living alone. People in this neighbourhood come from 110 different ethnic origins, and 32% are first-generation immigrants, while 30% are second-generation immigrants.

Neighbourhood Households

4,230

Neighbourhood Population

13,182

Household Size

- 1 person - 10%
- 2 persons - 28%
- 3 persons - 19%
- 4 persons - 25%
- 5 or more persons - 14%

Household Types

- One-person households - 10%
- Non-family households - 0%
- Families with children - 60%
- Couples without children - 24%
- Multiple families in household - 2%

Children Per Family

- 1 child - 24%
- 2 children - 33%
- 3 or more children - 12%

Broad Age Ranges

- 0 to 14 years - 17%
- 15 to 64 years - 67%
- 65 years and over - 14%



Scottish - 17%

Canadian - 16%

Irish - 16%

Italian - 12%

Age of Primary Household Maintainer

15 to 24 years - 0%

25 to 34 years - 4%

35 to 44 years - 13%

45 to 54 years - 30%

55 to 64 years - 26%

65 to 74 years - 14%

75 to 84 years - 7%

85 years and over - 2%

Specific Age Groups

0 to 4 years - 3%

5 to 9 years - 6%

10 to 14 years - 7%

15 to 19 years - 9%

20 to 29 years - 10%

30 to 39 years - 7%

40 to 49 years - 14%

50 to 59 years - 18%

60 to 69 years - 11%

over 70 years - 8%

Lorne Park Schools

This neighbourhood has great elementary schools, great secondary schools, elementary special programs, and secondary special programs. There are 12 public schools, 5 Catholic schools, 1 private school, and 1 alternative/special school serving this neighbourhood. The special programs offered at local schools include International Baccalaureate, Advanced Placement, Fine Arts, French Immersion, and Montessori.

Public Schools

12



# 5

## Private Schools

# 1

### Public

- [Port Credit SS](#)
- [ÉS Gaétan Gervais](#)
- [É Élé Horizon Jeunesse](#)
- [Lorne Park SS](#)
- [Kenollie PS](#)
- [Owenwood PS](#)
- [Riverside PS](#)
- [Whiteoaks PS](#)
- [Tecumseh PS](#)
- [Lorne Park PS](#)
- [Green Glade Sr PS](#)
- [Hillcrest MS](#)

### Catholic

- [ÉSC Sainte-Famille](#)
- [St Luke Catholic ES](#)
- [ÉÉC Saint-Jean-Baptiste](#)
- [Iona Catholic SS](#)
- [St Christopher School](#)

### Private

- [White Oaks Montessori School](#)

### Alternative/Special

- [Brian J Fleming Adult Learning Centre](#)



Lorne Park has some of the best parks and recreation facilities in the neighbourhood, with 8 parks and 27 recreational facilities for kids, sports parks, skating, and water access. There are 8 parks in this neighbourhood, with 27 recreational facilities in total. The average number of facilities per park is 3.

Number of Parks

8

Number of Recreation Facilities

27

Recreation Facilities in Neighbourhood Parks

- Playgrounds - 7
- Rinks - 2
- Tennis Courts - 12
- Ball Diamond - 1
- Sports Field - 1
- Beach - 1
- Botanical Garden - 1
- Trail - 1
- Arts/Performance Facility - 1



As part of our mission to help you with home affordability, we are actively searching for special offers from Canada's best mortgage providers. Watch this space!

Getting Around in Lorne Park

There are 70 transit stops in this neighbourhood. Rail stations include Port Credit. In Lorne Park, there are mostly vehicle commuters and a mix of commuting within and outside the city.



Commute within the city - 48%

Commute to another city - 51%

Commute Types

Vehicle - 80%

Transit - 16%

Walk/bike - 1%

Commute Times of Residents

15 to 29 minutes - 28%

30 to 44 minutes - 26%

45 to 59 minutes - 14%

60 minutes and over - 14%

Less than 15 minutes - 15%

Work and Education in Lorne Park

In Lorne Park, 60% of adult residents hold a bachelor's degree or higher and 83% have any postsecondary education. The professional, scientific and technical services industry is the most common for residents.

Household Income

Under \$30,000 - 2%

\$30,000 to \$39,999 - 2%

\$40,000 to \$49,999 - 2%

\$50,000 to \$59,999 - 2%

\$60,000 to \$69,999 - 3%

\$70,000 to \$79,999 - 3%

\$80,000 to \$89,999 - 4%

\$90,000 to \$99,999 - 3%

\$100,000 to \$124,999 - 8%

\$125,000 to \$149,999 - 8%

\$150,000 to \$199,999 - 13%

\$200,000 and over - 40%

Most Common Occupations (Top 3)

Management occupations - 23%





Most Common Industries (Top 3)

- Professional, scientific and technical services - 16%
- Finance and insurance - 10%
- Health care and social assistance - 9%

Employment

- Employed - 63% of people over age 15 are employed
- Unemployed - 4% are unemployed
- Not in the labour force - 32% are retired, students, homemakers, etc.

Lorne Park Homes

In this neighbourhood, there are mostly detached homes. This neighbourhood has a consistent population, with 27% of households having moved within the past 5 years and 9% having moved within the past year. It has mostly older homes and is mostly owner-occupied.

Home Types

- Single-detached house - 85%
- Semi-detached house - 2%
- Duplex - 1%
- Row house - 10%
- Low-rise apartment/condo - 0%
- High-rise apartment/condo - 0%

Condominium Status

- Condominium - 11%
- Not condominium - 88%

Number of Bedrooms in Homes

- 1 bedroom - 0%
- 2 bedrooms - 3%
- 3 bedrooms - 30%
- No bedrooms - 0%
- 4 or more bedrooms - 65%



1961 to 1980 - 41%

1981 to 1990 - 13%

1991 to 2000 - 10%

2001 to 2005 - 11%

2006 to 2010 - 4%

2011 to 2016 - 3%

1960 or before - 14%

Renters & Owners

Owner - 97%

Renter - 2%

See Lorne Park listings

REALM users log in  
here to view listings

or

View listings publicly  
on TRREB.ca

No REALM account? Ask your agent