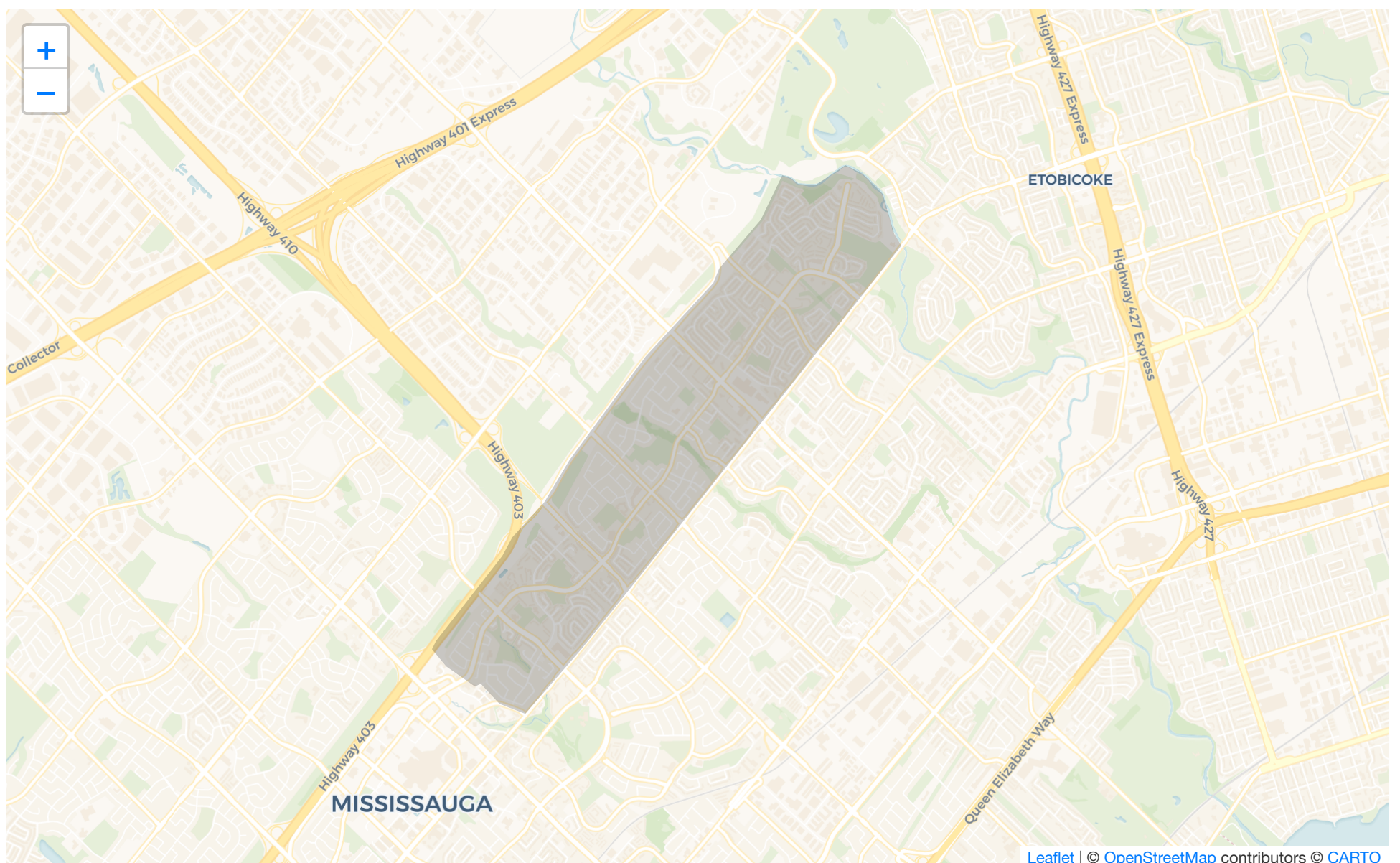


**NEIGHBOURHOOD GUIDE**

# Rathwood

In this Neighbourhood Guide, you'll find out more about the people who live here as well as the schools, parks and recreation facilities, homes, and more.

Rathwood has a consistent population, and is popular with people in their 20s, people in their 40s, people in their 50s, and people in their 60s. The Rathwood neighbourhood is a narrow residential strip in east Mississauga, with Eastgate Parkway as the northern boundary and Burnhamthorpe Rd in the south. Hurontario forms the western boundary, and Etobicoke Creek to the east. Rathwood has a number of schools and park lands. Housing in this neighbourhood is a mix of modern apartment condominiums, multi-level townhouses, semi-detached and single-detached homes. Rathburne Road and other major arteries run through this neighbourhood, with good access to Highways 403, 401, and 410.





households and 17% of households are one person living alone. People in Rathwood come from 143 different ethnic origins, and 55% are first-generation immigrants, while 30% are second-generation immigrants.

## Neighbourhood Households

**9,955**

## Neighbourhood Population

**28,867**

## Household Size

- 1 person - 16%
- 2 persons - 32%
- 3 persons - 20%
- 4 persons - 17%
- 5 or more persons - 11%

## Household Types

- One-person households - 16%
- Non-family households - 2%
- Families with children - 51%
- Couples without children - 25%
- Multiple families in household - 4%

## Children Per Family

- 1 child - 31%
- 2 children - 25%
- 3 or more children - 9%

## Broad Age Ranges

- 0 to 14 years - 13%
- 15 to 64 years - 64%
- 65 years and over - 21%



Polish - 11%

Ukrainian - 8%

Canadian - 7%

Portuguese - 7%

### **Age of Primary Household Maintainer**

15 to 24 years - 0%

25 to 34 years - 5%

35 to 44 years - 15%

45 to 54 years - 21%

55 to 64 years - 24%

65 to 74 years - 18%

75 to 84 years - 10%

85 years and over - 2%

### **Specific Age Groups**

0 to 4 years - 3%

5 to 9 years - 4%

10 to 14 years - 5%

15 to 19 years - 5%

20 to 29 years - 11%

30 to 39 years - 10%

40 to 49 years - 11%

50 to 59 years - 15%

60 to 69 years - 14%

over 70 years - 11%

## **Rathwood Schools**

Rathwood has great elementary schools, great secondary schools, elementary special programs, and secondary special programs. There are 16 public schools and 10 Catholic schools serving Rathwood. The special programs offered at local schools include French Immersion, International Baccalaureate, and Advanced Placement.

### **Public Schools**

# 16



# 10

## Public

[Tomken Road MS](#)

[T. L. Kennedy SS](#)

[The Valleys Sr PS](#)

[ÉE Micheline-Saint-Cyr](#)

[Burnhamthorpe PS](#)

[ÉS Gaétan Gervais](#)

[Westacres PS](#)

[É Élé Horizon Jeunesse](#)

[ÉS Jeunes sans frontières](#)

[Glenforest SS](#)

[Glenhaven Sr PS](#)

[Forest Glen PS](#)

[Applewood Heights SS](#)

[Silverthorn PS](#)

[Corsair PS](#)

[Briarwood PS](#)

## Catholic

[ÉSC Sainte-Famille](#)

[John Cabot Catholic SS](#)

[ÉÉC René-Lamoureux](#)

[Sts Martha & Mary School](#)

[Father Michael Goetz SS](#)

[St Basil School](#)

[Philip Pocock Catholic HS](#)

[Sts. Peter & Paul Catholic School](#)

[St Charles Garnier School](#)

[St Vincent de Paul School](#)

## Having Fun in Rathwood

Fun is easy to find at the many parks & rec facilities here. Parks in Rathwood feature playgrounds for kids, sports parks, dog parks, and skating. There are 15 parks in this neighbourhood, with 104 recreational facilities in total. The average number of facilities per park is 6.



**15****Number of Recreation Facilities****104****Recreation Facilities in Neighbourhood Parks**

Playgrounds - 18

Dog Park - 1

Rinks - 4

Tennis Courts - 6

Basketball Courts - 2

Ball Diamonds - 15

Sports Fields - 29

Track - 1

Splash Pad - 1

Winter Sports Facilities - 2

Sports Courts - 4

Outdoor Games Facilities - 7

BMX Track - 1

Stadium - 1

Botanical Gardens - 3

Community Garden - 1

Fishing Location - 1

Trails - 7



As part of our mission to help you with home affordability, we are actively searching for special offers from Canada's best mortgage providers. Watch this space!



mix of commuting within and outside the city.

### **Commute Destination for Residents**

Commute within the city - 51%

Commute to another city - 47%

### **Commute Types**

Vehicle - 78%

Transit - 18%

Walk/bike - 2%

### **Commute Times of Residents**

15 to 29 minutes - 36%

30 to 44 minutes - 21%

45 to 59 minutes - 9%

60 minutes and over - 15%

Less than 15 minutes - 17%

## **Work and Education in Rathwood**

In Rathwood, 36% of adult residents hold a bachelor's degree or higher and 67% have any postsecondary education. The retail trade industry is the most common for residents.

### **Household Income**

Under \$30,000 - 7%

\$30,000 to \$39,999 - 6%

\$40,000 to \$49,999 - 6%

\$50,000 to \$59,999 - 7%

\$60,000 to \$69,999 - 6%

\$70,000 to \$79,999 - 6%

\$80,000 to \$89,999 - 6%

\$90,000 to \$99,999 - 5%

\$100,000 to \$124,999 - 12%

\$125,000 to \$149,999 - 9%

\$150,000 to \$199,999 - 10%



## Most Common Occupations (Top 3)

Sales and service occupations - 23%

Business, finance and administration occupations - 20%

Trades, transport and equipment operators and related occupations - 14%

## Most Common Industries (Top 3)

Retail trade - 11%

Manufacturing - 10%

Professional, scientific and technical services - 9%

## Employment

Employed - 59% of people over age 15 are employed

Unemployed - 4% are unemployed

Not in the labour force - 36% are retired, students, homemakers, etc.

## Rathwood Homes

In this neighbourhood, there are a mix of home types. This neighbourhood has a consistent population, with 25% of households having moved within the past 5 years and 7% having moved within the past year. It has a mix of older and newer homes and is mostly owner-occupied.

## Home Types

Single-detached house - 45%

Semi-detached house - 5%

Duplex - 3%

Row house - 15%

Low-rise apartment/condo - 9%

High-rise apartment/condo - 20%

## Condominium Status

Condominium - 23%

Not condominium - 77%

## Number of Bedrooms in Homes

1 bedroom - 7%

2 bedrooms - 17%



4 or more bedrooms - 33%

### Period of Home Construction

1961 to 1980 - 43%

1981 to 1990 - 43%

1991 to 2000 - 6%

2001 to 2005 - 3%

2006 to 2010 - 0%

2011 to 2016 - 0%

1960 or before - 2%

### Renters & Owners

Owner - 75%

Renter - 24%

---

## See Rathwood listings

REALM users log in  
here to view listings

or

View listings publicly  
on TRREB.ca

No REALM account? Ask your agent